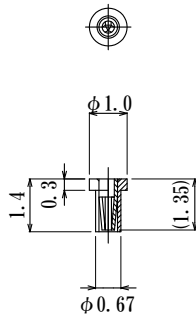


Thru Hole Short type, Round Socket Pin

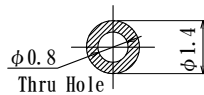


: mm

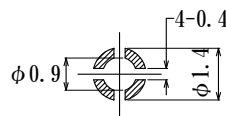
NV5P-F10L14-GG



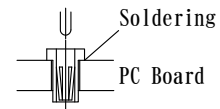
Cream Solder Area



Metal Mask Size



How to use

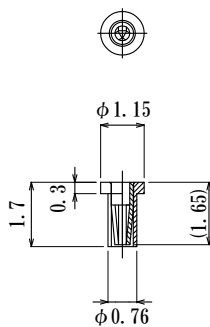


Cream solder coating area
Metal Mask Thickness
100 μ m ~ 150 μ m

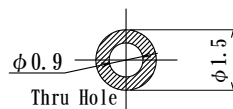


Acceptable Plug dia.
 ϕ 0.18 ~ ϕ 0.29

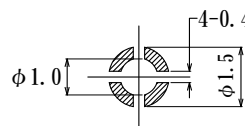
NV6P-F115L17-GG



Cream Solder Area



Metal Mask Size

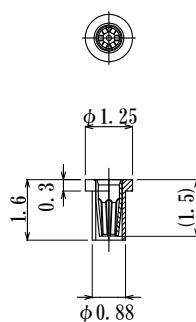


Cream solder coating area
Metal Mask Thickness
100 μ m ~ 150 μ m

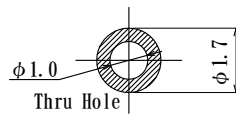


Acceptable Plug dia.
 ϕ 0.21 ~ ϕ 0.35

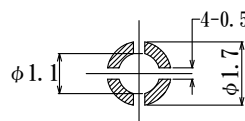
NV7P-F125L16-GG



Cream Solder Area



Metal Mask Size



Cream solder coating area
Metal Mask Thickness
100 μ m ~ 150 μ m

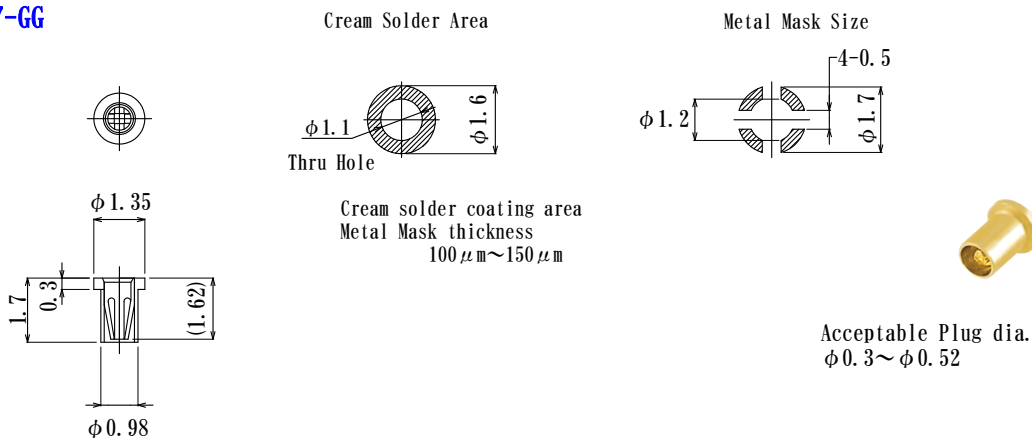


Acceptable Plug dia.
 ϕ 0.21 ~ ϕ 0.42

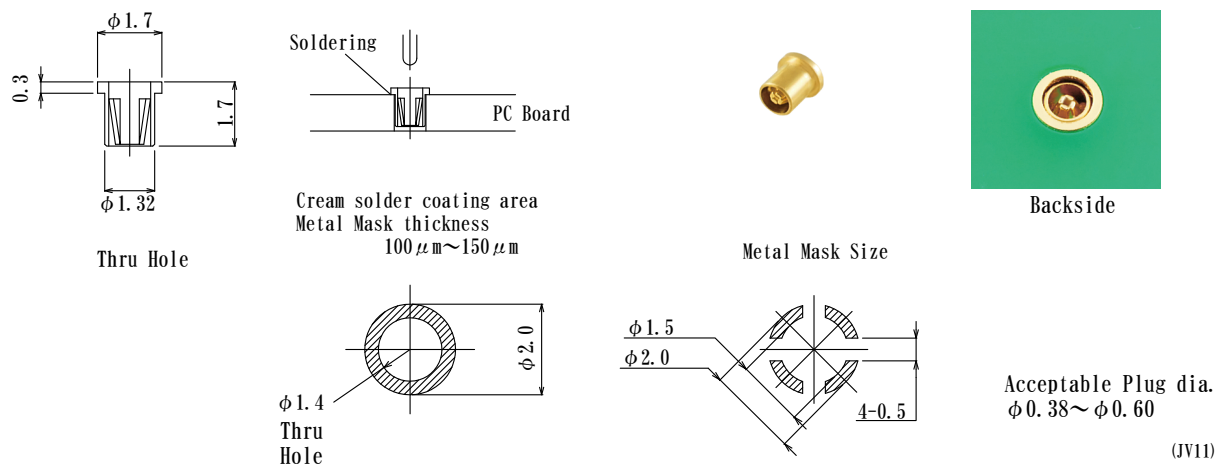
Thru Hole Short type, Round Socket Pin

: mm

NZP-F135L17-GG



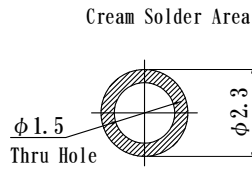
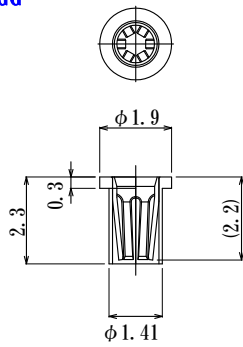
JSS17-GG



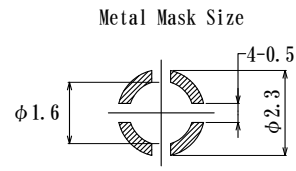
Thru Hole Short type, Round Socket Pin

: mm

866-F19L23-GG



Cream Solder Area



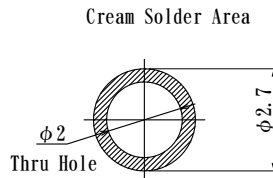
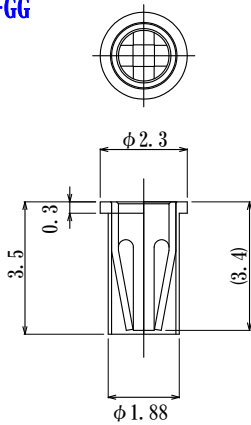
Metal Mask Size

Cream solder coating area
Metal Mask thickness
100 μ m ~ 150 μ m

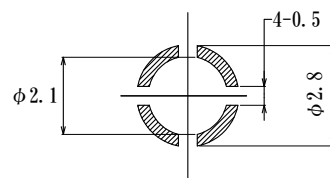


Acceptable Plug dia.
 ϕ 0.65 ~ ϕ 0.85

CM1-F23L35-GG



Cream Solder Area



Metal Mask Size

Cream solder coating area
Metal Mask thickness
100 μ m ~ 150 μ m

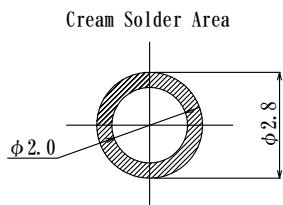
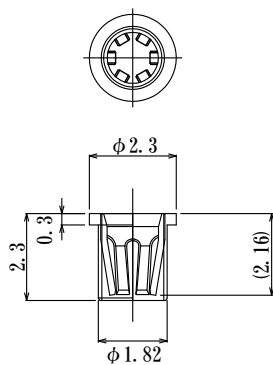


Acceptable Plug dia.
 ϕ 0.7 ~ ϕ 1.05

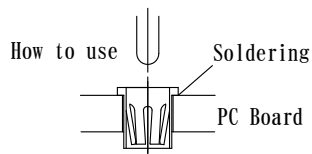
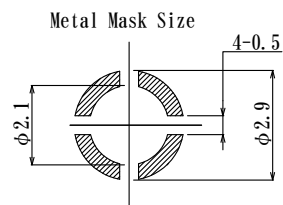
Thru Hole Short type, Round Socket Pin

: mm

DPA5P-F23L23-GG



Cream solder coating area
Stencil mask thickness
100 μm ~ 150 μm



Acceptable Plug dia.
 $\phi 1.0 \sim \phi 1.3$