

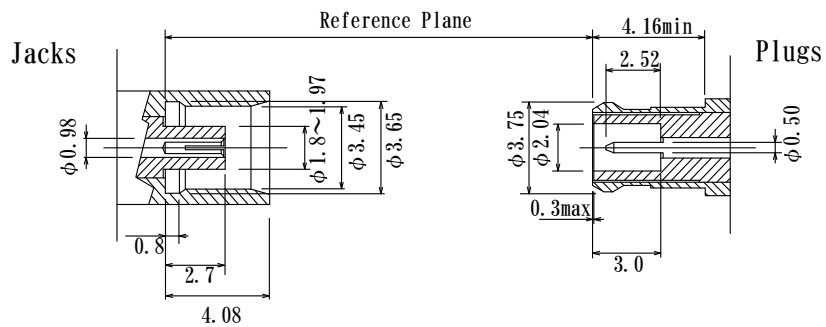
MCX Connectors

MCX connector resembles SMB connector in that MCX has snap-on mating figure.
And MCX connector saves 30% space comparing to SMB connector.

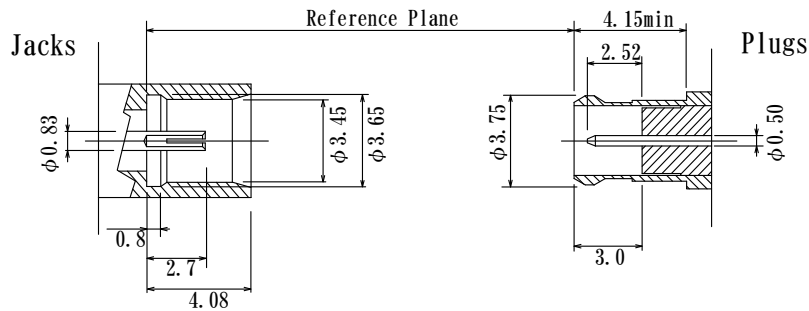
Specifications		CECC22220
Nominal impedance		50Ω / 75Ω
VSWR		DC~6GHz 1.4 max / DC~1GHz 1.3 max
Insulation resistance		1000MΩ min at DC500V
Dielectric withstanding voltage		AC500V 1 minute
Temperature range		-55℃~+85℃
Mating Holding Force		25.5N (2.6kg) max
Contact durability		less than 10mΩ after 500 matings
Material	Shell	Brass Gold plated / Nickel plated
	Spring Shell	Beryllium copper/Phosphor bronze Gold plated / Nickel plated
	Center Socket Contact	Beryllium copper Heat treated, Gold plated

Specifications may be subject to change without notice.

Interface Dimensions 50Ω



Interface Dimensions 75Ω



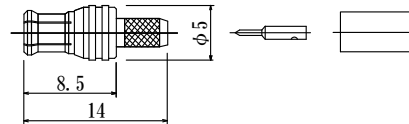
MCX 50Ω Connectors

MCX 50Ω Plugs

MCXP-RG174G
MCXP-RG178G
MCXP-15D



Part No.	Applicable Cable
MCXP-RG174G	RG174/U, RG316/U
MCXP-RG178G	RG178B/U, RG196A/U
MCXP-15D	1.5D2V

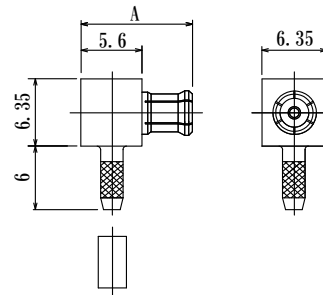


●Au

MCXP-L-RG174G
MCXP-L-RG178G



Part No.	Applicable Cable	A
MCXP-L-RG174G	RG174/U, RG316/U	9.8
MCXP-L-RG178G	RG178B/U, RG196A/U	9.4



●Au