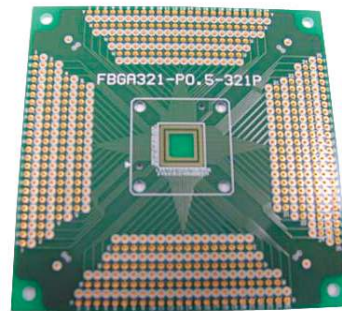
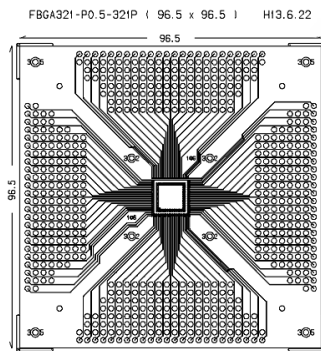


## 50Ω Impedance Extension PCB

- Suitable for IC evaluation at high RF frequency.
- Your Specific Custom Designs welcome. Consult us for details.

IC foot print : Your spec.  
 IC pitch : 0.4mm, 0.5mm, 0.65mm, 0.8mm etc  
 Extension pitch : 1.78mm, 2.54mm etc  
 Board thickness : 1.6mm~3.6mm  
 Number of layer : 2~14

(example)  
 0.5mmPitch 321 Circuits 8 layers



(example)  
 0.5mmPitch 248 Circuits 6 layers

