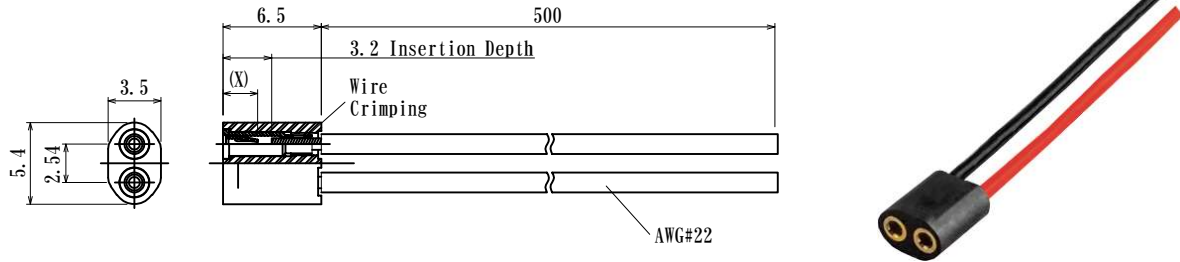


Laser Diode Socket, With Cable

2.54mm Pitch

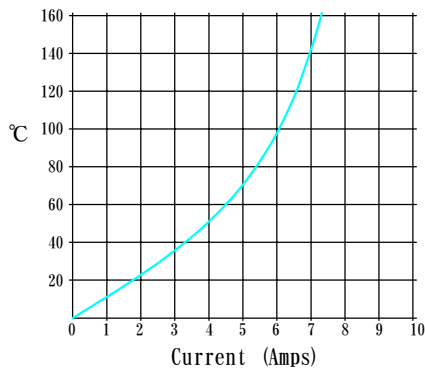
| P/N | X | Acceptable Plug | Current Rating | Remark | Socket pin |
|--------------------------------|-----|-----------------|----------------|--------------|-----------------|
| WAS-LD2P254-JCON-L500 | 2.3 | φ 0.4~φ 0.60 | 2.5A | Medium Force | (PD-JCON-L59) |
| WAS-LD2P254-B12CON-L500 | 2.4 | φ 0.7~φ 0.85 | 4A | Medium Force | (PD-B12CON-L59) |



Plug : φ0.45/0.018"
Brass Au Plating over Ni

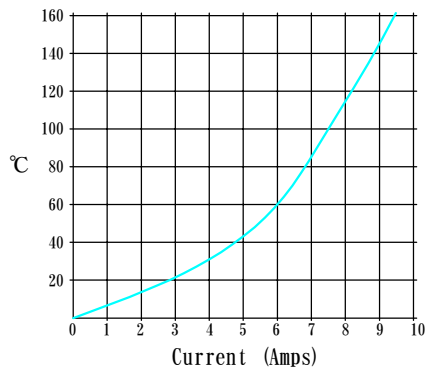
Plug : φ0.7/0.028"
Brass Au Plating over Ni

Temperature Rise
(When current is applied to two cables at the same time)

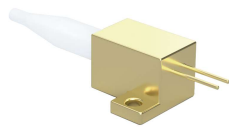


WAS-LD2P254-JCON-L500

Temperature Rise
(When current is applied to two cables at the same time)



WAS-LD2P254-B12CON-L500



For Fiber Coupled Laser Diode

Note:

- The temperature rise data is a reference value.
When passing a large current, check the operation under the customer's test environment before using.
- The core wire may be exposed at the connection part.
If necessary, you can attach a shrink tube etc. so please contact us.
- Please note that the cable may come off if you apply excessive force.
(Reference : 36N Max/cable)