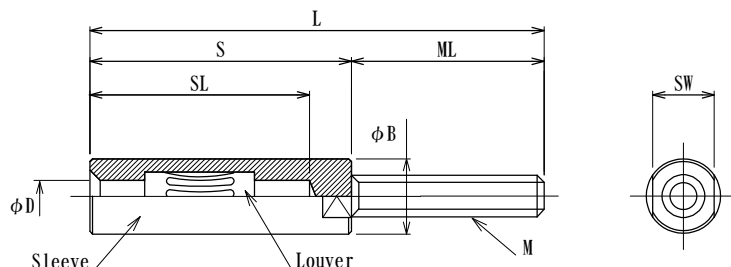


UJMST series, High Current Socket Pins, thread type

- Can be attached to Bus bar, Insulated panel, Round terminal.
- Can be attached to a threaded Conductor.
- Your specific custom designs welcome. Consult us for details.



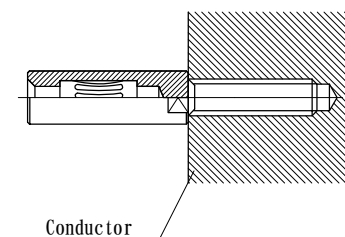
Washers, Spring washers, and Nuts are not included.
Please contact us as it is possible to prepare it.

Operating Temperature : -55°C ~ +125°C

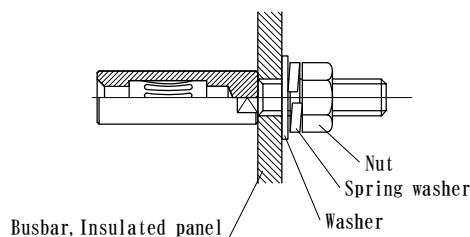
| P/N | Plug Dia. | Plating Louver/ Sleeve | φD | φB | L | M | ML | S | SL | SW | Current Rating [A] at 25°C | Remarks | |
|-------------------------------|-----------|------------------------------|------|------|-------|-----------|---------------|-------|------|------|----------------------------|--------------------------|--------------------------|
| UJMST20AG | 2.0 | Au | 2.2 | 5.5 | 33.0 | M3x0.5P | Coarse thread | 14.0 | 19.0 | 15.5 | 4.2 | 20 | (LV8/13-T015) |
| UJMST20AS-HS | 2.0 | Au/Ag | 2.2 | 6.0 | 35.0 | M3x0.5P | | 15.0 | 20.0 | 16.8 | 5.0 | 25 | (LV082/12-T012-BE25-G25) |
| UJMST25AS-HS | 2.5 | Au/Ag | 2.7 | 6.0 | 35.0 | M3x0.5P | | 15.0 | 20.0 | 16.8 | 5.0 | 30 | (LV082/14-T012-BE25-G25) |
| UJMST30AG | 3.0 | Au | 4.1 | 6.0 | 39.0 | M4x0.7P | | 19.0 | 20.0 | 16.5 | 5.0 | 30 | (LV8/17-T015) |
| UJMST30AS-HS | 3.0 | Au/Ag | 3.2 | 6.5 | 39.0 | M4x0.7P | | 19.0 | 20.0 | 16.8 | 5.0 | 35 | (LV082/20-T012-BE25-G25) |
| UJMST40AG | 4.0 | Au | 5.2 | 8.0 | 49.0 | M5x0.8P | | 24.0 | 25.0 | 20.0 | 6.6 | 45 | (LV8/21-T015) |
| UJMST40AS-HS | 4.0 | Au/Ag | 4.2 | 8.2 | 49.0 | M5x0.8P | | 24.0 | 25.0 | 19.8 | 7.0 | 50 | (LV082/20-T012-BE25-G25) |
| UJMST50AG | 5.0 | Au | 5.9 | 8.3 | 50.0 | M5x0.8P | | 25.0 | 25.0 | 20.0 | 5.6 | 60 | (LV115/17-T020) |
| UJMST50AS-HS | 5.0 | Au/Ag | 5.2 | 8.3 | 49.0 | M5x0.8P | | 24.0 | 25.0 | 23.0 | 7.0 | 70 | (LV115/17-T018-BE25-G25) |
| UJMST60AG | 6.0 | Au | 6.8 | 9.6 | 52.0 | M6x1.0P | | 27.0 | 25.0 | 23.0 | 7.5 | 85 | (LV115/20-T015) |
| UJMST60AS-HS | 6.0 | Au/Ag | 6.2 | 9.6 | 52.0 | M6x1.0P | 27.0 | 25.0 | 23.0 | 8.0 | 90 | (LV115/20-T018-BE25-G25) | |
| UJMST80AG | 8.0 | Au | 8.2 | 14.0 | 61.0 | M8x1.0P | Fine thread | 36.0 | 25.0 | 23.0 | 11.0 | 120 | (LV115/26-T020) |
| UJMST80AS-HS | 8.0 | Au/Ag | 8.2 | 14.0 | 60.0 | M8x1.0P | | 35.0 | 25.0 | 23.0 | 11.0 | 125 | (LV115/26-T018-BE25-G25) |
| UJMST100AS-HS | 10.0 | Ag | 10.2 | 16.0 | 82.0 | M10x1.5P | Coarse thread | 40.0 | 42.0 | 34.0 | 13.0 | 180 | (LV2PC) |
| UJMST120AS-HS | 12.0 | Ag | 12.2 | 18.0 | 88.0 | M12x1.75P | | 46.0 | 42.0 | 34.0 | 13.0 | 230 | |
| UJMST140AS-HS | 14.0 | Ag | 14.2 | 20.0 | 96.0 | M14x2.0P | | 48.0 | 48.0 | 38.0 | 17.0 | 280 | |
| UJMST160AS-HS | 16.0 | Ag | 16.2 | 22.0 | 104.0 | M16x2.0P | | 56.0 | 48.0 | 38.0 | 19.0 | 340 | |
| UJMST180AS-HS | 18.0 | Ag | 18.2 | 25.0 | 108.0 | M16x2.0P | | 56.0 | 52.0 | 42.0 | 22.0 | 400 | |
| UJMST200AS-HS | 20.0 | Ag | 20.2 | 28.0 | 120.0 | M18x2.5P | | 68.0 | 52.0 | 42.0 | 24.0 | 460 | |
| UJMST250AS-HS | 25.0 | Ag | 25.2 | 38.0 | 145.0 | M20x2.5P | | 70.0 | 75.0 | 62.0 | 32.0 | 620 | |
| UJMST300AS-HS | 30.0 | Ag | 30.2 | 42.0 | 152.0 | M24x2.0P | | 77.0 | 75.0 | 62.0 | 36.0 | 800 | |
| UJMST350AS-HS | 35.0 | Ag | 35.2 | 48.0 | 165.0 | M30x2.0P | Fine thread | 85.0 | 80.0 | 62.0 | 41.0 | 1000 | |
| UJMST400AS-HS | 40.0 | Ag | 40.2 | 52.0 | 180.0 | M36x3.0P | | 100.0 | 80.0 | 62.0 | 46.0 | 1200 | |

○How to use (Example)

1) Attaching to Threaded Conductor



2) Attaching to Bus bar or Insulated panel



3) Attaching to Round terminal

