

Right Angle type, High current Socket pin

- Socket pin right angle to wire
- Space saving
- Mating/unmating, Easy Circuit exchange

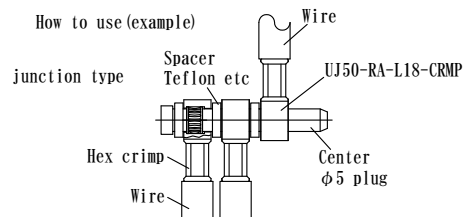
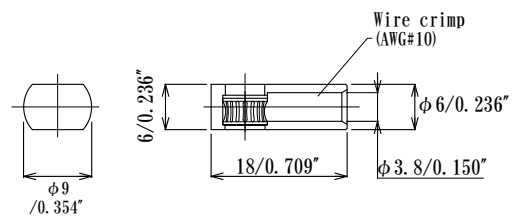
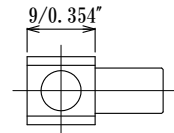
φ5.0mm/0.197" Right Angle Socket

UJ50-RA-L18-CRMP

Current rating : 25A at 25°C



Acceptable plugpin
: φ5.0mm/φ0.197" dia.



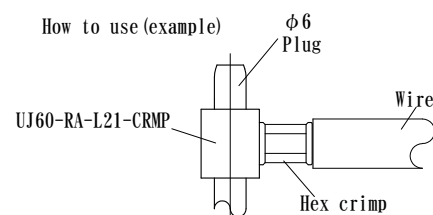
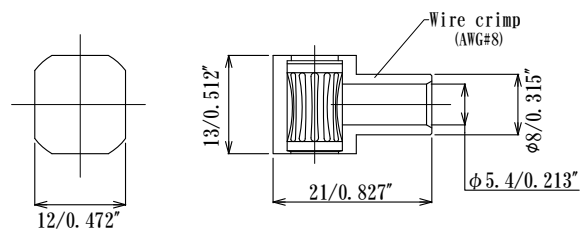
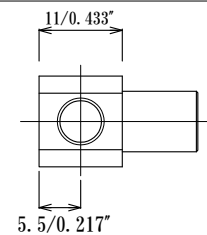
φ6.0mm/0.236" Right Angle Socket

UJ60-RA-L21-CRMP

Current rating : 50A at 25°C



Acceptable plugpin
: φ6.0mm/φ0.236" dia.



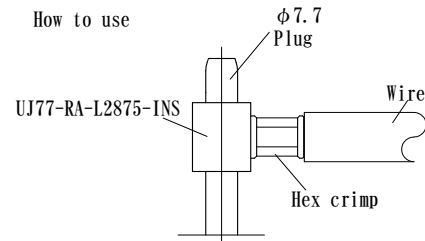
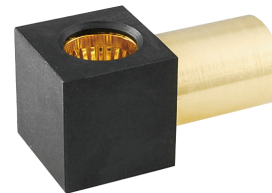
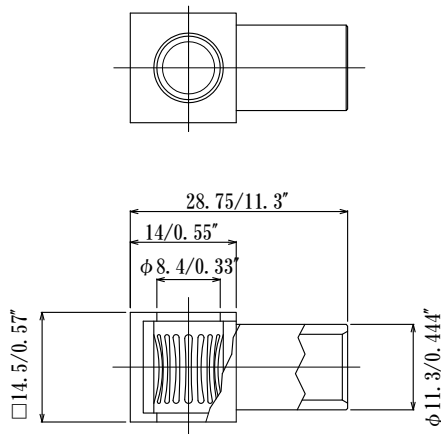
Right Angle type, High current Socket with Insulator

80A

- Socket pin right angle to wire
- Space saving
- Mating/unmating, Circuit exchange

UJ77-RA-L2875-INS

Acceptable plugpin
: $\phi 7.7\text{mm}/\phi 0.303\text{''}$ dia.
Current rating : DC80A at 25°C



Materials
Socket pin
Louver: Beryllium Copper, Heat treated
Gold Plated over Nickel plating
Sleeve: Brass, Gold Plating over Nickel plating
Insulator: PBT glass filled or PPS, black, UL94V-0