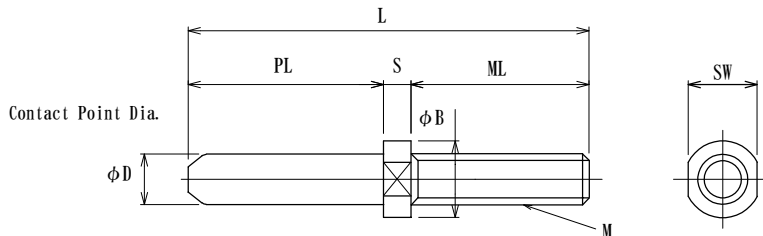


UJMPT series, High Current Plugs, thread type

- Can be attached to Bus bar, Insulated panel, Round terminal.
- Can be attached to a threaded Conductor.
- Your specific custom designs welcome. Consult us for details.



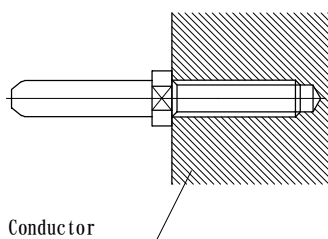
Operating Temperature : -55 to +125°C

Washers, Spring washers, and Nuts are not included. Please contact us as it is possible to prepare it.

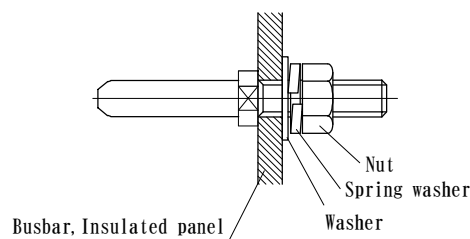
P/N	Plating	φD	φB	L	M	ML	S	PL	SW	Current Rating [A] at 25°C	
UJMPT20AG	Au	2.0	4.0	33.5	M3x0.5P	Coarse thread	16.0	2.5	15.0	3.2	20
UJMPT20AS-HS	Ag	2.0	4.0	32.5	M3x0.5P		15.0	2.5	15.0	4.0	25
UJMPT25AS-HS	Ag	2.5	4.0	32.5	M3x0.5P		15.0	2.5	15.0	4.0	30
UJMPT30AG	Au	3.0	5.0	33.5	M4x0.7P		16.0	2.5	15.0	4.2	30
UJMPT30AS-HS	Ag	3.0	5.8	38.0	M4x0.7P		19.0	2.5	16.5	5.0	35
UJMPT40AG	Au	4.0	6.0	39.5	M5x0.8P		18.0	2.5	19.0	5.1	45
UJMPT40AS-HS	Ag	4.0	6.0	45.5	M5x0.8P		24.0	2.5	19.0	6.0	50
UJMPT50AG	Au	5.0	7.0	45.5	M5x0.8P		20.0	3.0	22.5	5.6	60
UJMPT50AS-HS	Ag	5.0	7.0	49.5	M5x0.8P		24.0	3.0	22.5	7.0	70
UJMPT60AG	Au	6.0	8.3	50.0	M6x1.0P		24.0	3.5	22.5	6.8	85
UJMPT60AS-HS	Ag	6.0	8.3	53.0	M6x1.0P		27.0	3.5	22.5	8.0	90
UJMPT80AG	Au	8.0	9.5	51.0	M8x1.0P		Fine thread	25.0	3.5	22.5	8.3
UJMPT80AS-HS	Ag	8.0	9.5	61.0	M8x1.0P	35.0		3.5	22.5	11.0	125
UJMPT100AS-HS	Ag	10.0	15.0	79.0	M10x1.5P	Coarse thread	40.0	5.0	34.0	13.0	180
UJMPT120AS-HS	Ag	12.0	18.0	85.0	M12x1.75		46.0	5.0	34.0	13.0	230
UJMPT140AS-HS	Ag	14.0	20.0	93.0	M14x2.0P		48.0	7.0	38.0	17.0	280
UJMPT160AS-HS	Ag	16.0	22.0	101.0	M16x2.0P		56.0	7.0	38.0	19.0	340
UJMPT180AS-HS	Ag	18.0	25.0	105.0	M16x2.0P		56.0	7.0	42.0	22.0	400
UJMPT200AS-HS	Ag	20.0	28.0	117.0	M18x2.5P		68.0	7.0	42.0	24.0	460
UJMPT250AS-HS	Ag	25.0	38.0	141.0	M20x2.5P	70.0	9.0	62.0	32.0	620	
UJMPT300AS-HS	Ag	30.0	42.0	148.0	M24x2.0P	Fine thread	77.0	9.0	62.0	36.0	800
UJMPT350AS-HS	Ag	35.0	48.0	157.0	M30x2.0P		85.0	10.0	62.0	41.0	1000
UJMPT400AS-HS	Ag	40.0	52.0	173.0	M36x3.0P		100.0	11.0	62.0	46.0	1200

○How to use (Example)

1) Attaching to threaded Conductor



2) Attaching to Bus bar or Insulated panel



3) Attaching to Round terminal

