

## IC Conversion Adapters

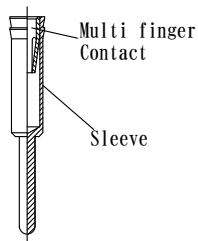
Features ·Use together with mating test socket. Adapter Socket is soldered to PC board.  
·After repeatedly use of test socket, if the test socket loses function, you can exchange to new test socket.

### Specifications:

Temperature Range : -55°C~+125°C  
Current Rating : 1A  
Contact Resistance : 15mΩ/pin max  
Insulation Resistance : 200MΩ以上  
Durability : 500cycle min

### Materials:

Socket Pin  
Sleeve : Brass, Gold plated over Ni  
Contact : Beryllium Copper, Gold plated over Ni  
Insulator : Glass Epoxy, PEEK etc



Used pin  
image

A design requires the following information.

- IC socket sample, the drawing of an inspection socket lead shape.
- Limitations, such as outside, height, and operating area
- Others

example) Is it used by a two-layer structure  
The necessity for extraction tool  
Thickness of a PCB  
Restriction of a through hole

How to order (When standard item.)

**BB 100 - 0240 - XXXX**

Pitch

150:1.5mm

127:1.27mm

100:1.00mm

080:0.8mm

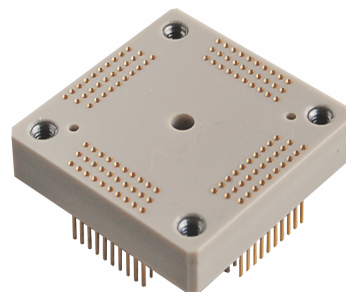
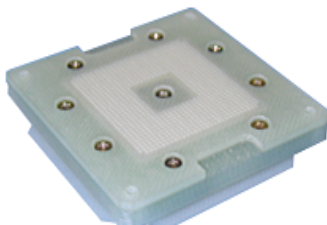
065:0.65mm

050:0.5mm

040:0.4mm

Number of position

The product number which our company decides



High Temperature Spec  
-55°C~+250°C



High Temp.  
Socket Pin

## IC Conversion Adapters / Fork Socket pin type

