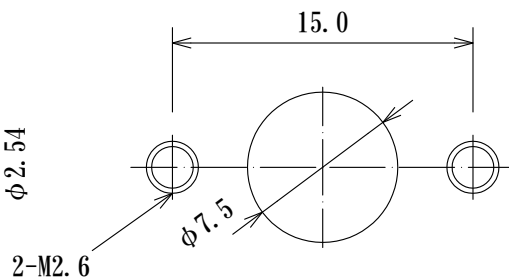
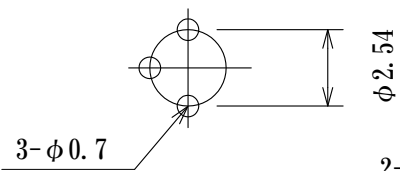


PCB dimension  
(typical)

Mounting Dimension



Acceptable Plug  $\phi 0.45$  typical

Date	JC ELECTRONICS CORPORATION	
2016/07/21		
Materials Finish	SOCKET PINS	Contact: Beryllium Copper Gold over Ni Plated
	INSULATOR	Body: Brass Gold over Ni Plated PPS (Black)
Dimensions Style mm	Title LASER DIODE SOCKET	
Third Angle Projection	Part Number LD254P-3P-F7/M26-E	
Rev. No	0	

Ⓐ