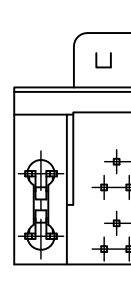
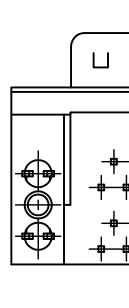
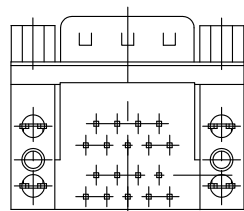


Specification
 Current Rating: 3AMP MAX.
 Contact Resistance: 25mΩ max.
 Insulation Reakstance: 3000MΩ min at 500VDC
 Dielectric Voltage: 1000VAC/Mminute
 Operating Temperature: -55°C to +105°C
 *Attached Parts: Screw : M2.6



*Please note that you can't specify either of these type.
 We appreciate your understanding.

Date		JC ELECTRONICS CORPORATION
2016/06/13		
Materials Finish	INSULATOR	UL94V-0
	CONTACT	Copper Alloy
Materials Finish	SHELL	Steel
	RIVET	Copper Alloy
	SCREW	Copper Alloy
Dimensions Style	Title	
mm	DUAL PORTS D-sub	
Third Angle Projection	Part Number	
	JCV-9P9P-19-8-E	
Rev. No	0	

(A)