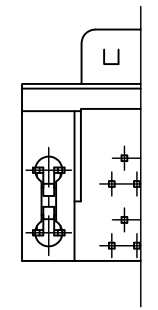
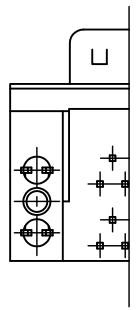
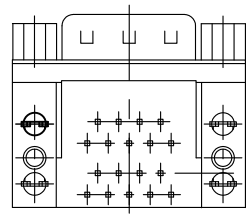


**Specification**  
 Current Rating: 3AMP MAX.  
 Contact Resistance: 25mΩ max.  
 Insulation Reakstance: 3000MΩ min at 500VDC  
 Dielectric Voltage: 1000VAC/Mminute  
 Operating Temperature: -55°C to +105°C  
 \*Attached Parts: Screw : M2.6



\*Please note that you can't specify either of these type.  
 We appreciate your understanding.

<b>Date</b>		<b>JC ELECTRONICS CORPORATION</b>	
2016/06/13			
<b>Materials Finish</b>		INSULATOR	UL94V-0
		CONTACT	Copper Alloy
		SHELL	Steel
		RIVET	Copper Alloy
		SCREW	Copper Alloy
<b>Dimensions Style</b>		Title	
mm		DUAL PORTS D-sub	
Third Angle Projection		Part Number	
		JCV-9P9P-15-8	
<b>Rev. No</b>	0		