

High Current Spring Probes 8Y500 Series

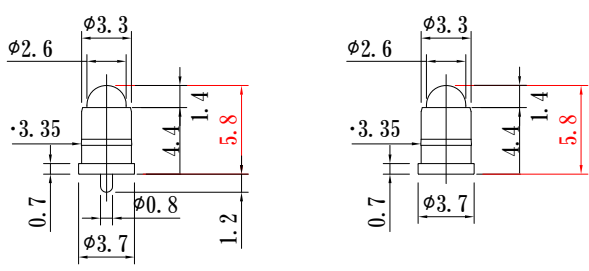
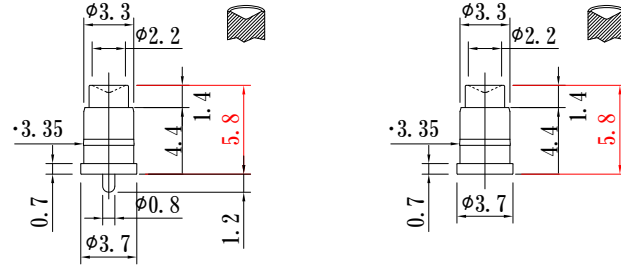
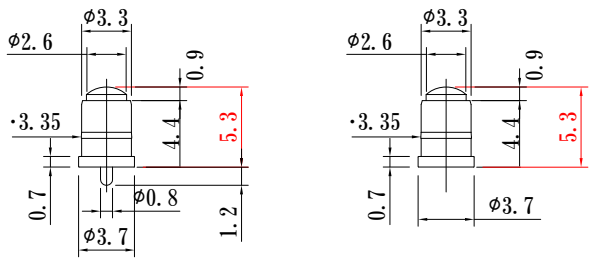

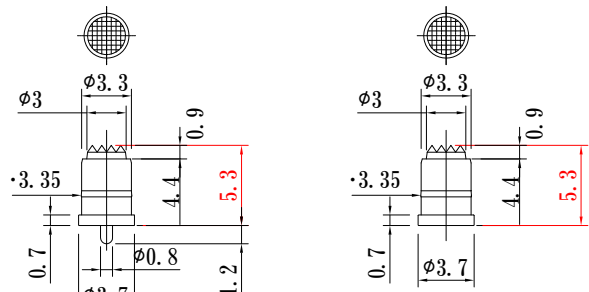

10A max
8A max

Specifications

Contact resistance	:	50mΩ max *
Current rating at 25°C	:	DC 10.0A *
Durability	:	500,000 cycles
Operating temperature	:	-45°C ~ +130°C

Material

Barrel	:	Brass, Au, over Ni
Plunger	:	Brass, Au over Ni or Steel Au over Ni
Spring	:	Copper alloy

<p>Sphere type</p> <p>Full travel 1.4mm Preload 0.87N (89gf) 1.27N (130gf) at 1.0mm travel Current max 10A at 25°C</p>	<p>Concave type</p> <p>Full travel 1.4mm Preload 0.87N (89gf) 1.27N (130gf) at 1.0mm travel Current max 10A at 25°C</p>
 <p>8Y500-H58S14-SP-SD08 8Y500-H58S14-SP-SMT</p>	 <p>8Y500-H58S14-CC-SD08 8Y500-H58S14-CC-SMT</p>
<p>Sphere type</p> <p>Full travel 0.9mm Preload 1.34N (137gf) 2.06N (211gf) at 0.6mm travel Current max 10A at 25°C</p> <p>Make to order</p>  <p>8Y500-H53S09-SP-SD08 8Y500-H53S09-SP-SMT</p>	
<p>Crown type</p> <p>Full travel 0.9mm Preload 1.34N (137gf) 2.06N (211gf) at 0.6mm travel Current max 8A at 25°C</p>  <p>8Y500-H53S09-CR-SD08 8Y500-H53S09-CR-SMT</p>	 <p>*In case of Gold plated PCB land or Gold plated metal for the mating surface.</p>

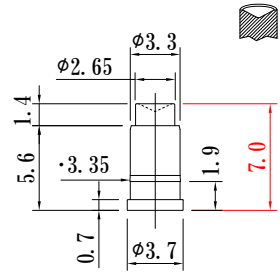
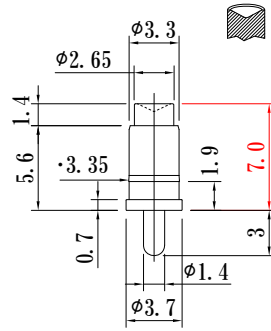
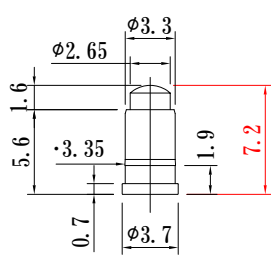
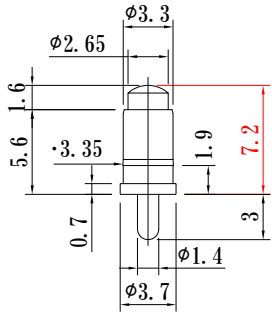
High Current Spring Probes

8Y500 Series

10A max
8A max

Sphere type
 Full travel 1.6mm
 Preload 0.37N (37.3gf)
 1.82N (186gf) at 1.2mm travel
 Current max 10A at 25°C

Concave type
 Full travel 1.4mm
 Preload 0.33N (33.9gf)
 0.83N (84.7gf) at 1.0mm travel
 Current max 10A at 25°C



8Y500-H72S16-SP-SD14

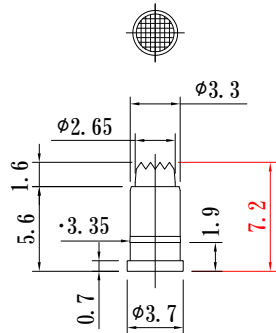
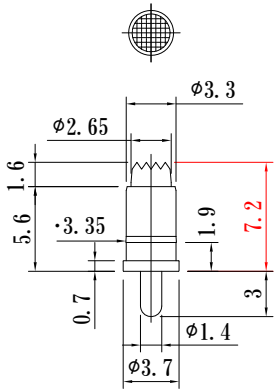
8Y500-H72S16-SP-SMT

8Y500-H70S14-CC-SD08

8Y500-H70S14-CC-SMT

Crown type
 Full travel 1.6mm
 Preload 0.37N (37.3gf)
 1.82N (186gf) at 1.2mm travel
 Current max 10A at 25°C

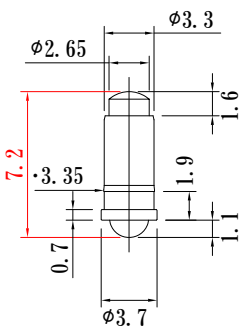
Plunger material : Copper alloy



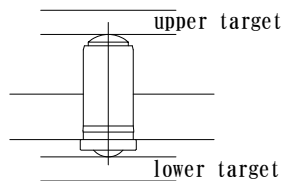
8Y500-H72S16-CR-SD14

8Y500-H72S16-CR-SMT

両端
Double ended
Sphere type
 Full travel 2.7mm
 Preload 0.17N (17.0gf)
 0.91N (93gf) at 1.8mm travel
 Current max 8A at 25°C



How to use



8Y500DB-H72S27-SP

Call us for your custom specification.

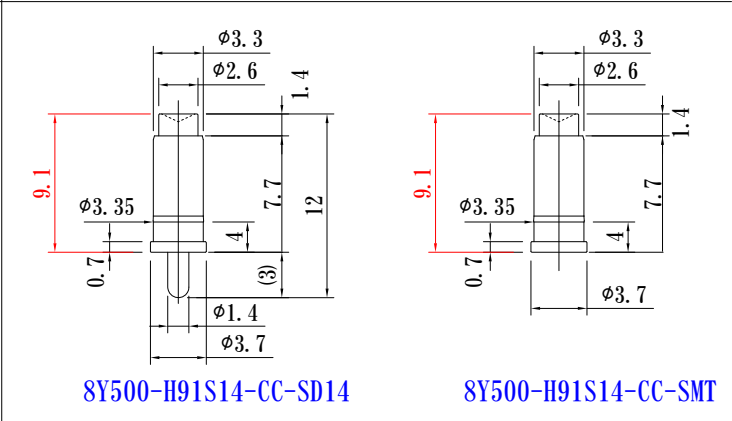
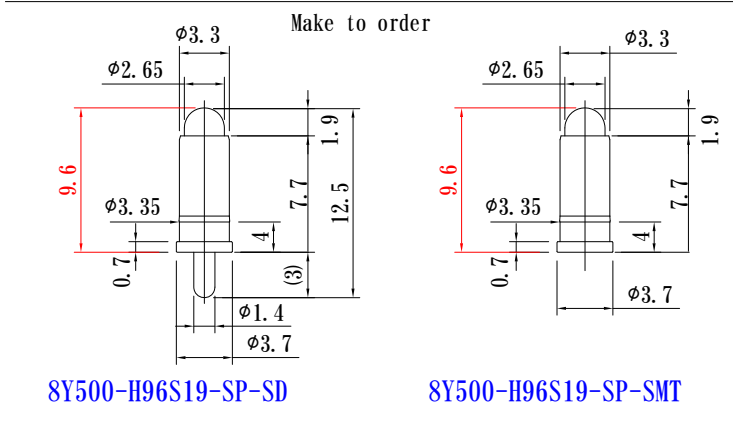
High Current Spring Probes

8Y500 Series

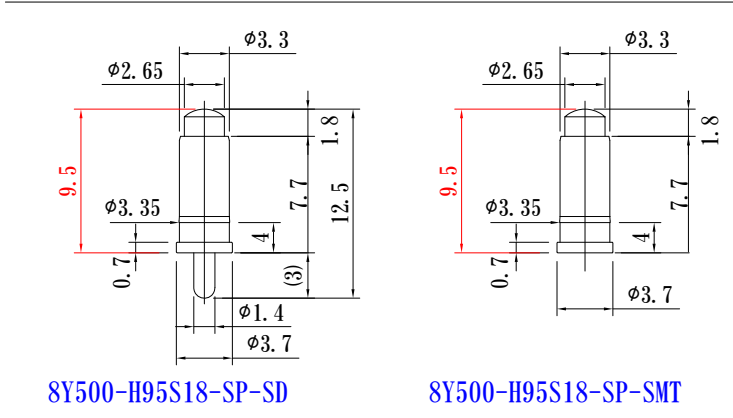
10A max
8A max

Sphere type
Full travel 1.9mm
Preload 0.37N (38.1gf)
0.78N (80gf) at 1.3mm travel
Current max 10A at 25°C

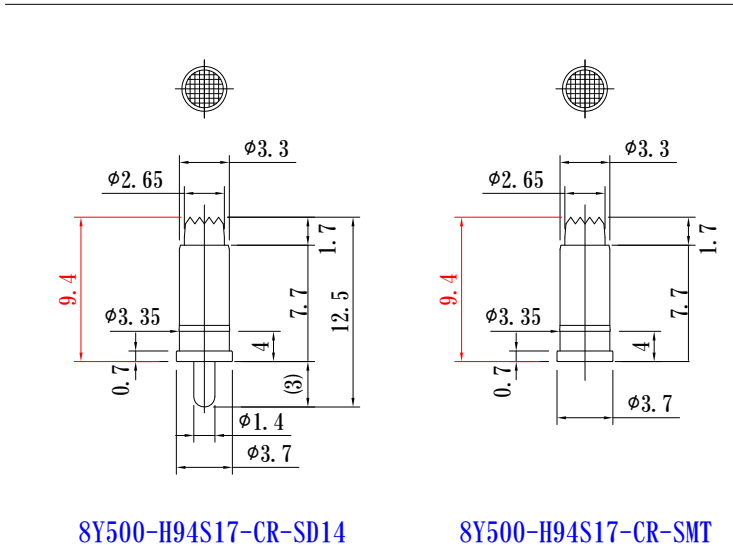
Concave type
Full travel 1.4mm
Preload 0.61N (62.2gf)
1.82N (186gf) at 1.0mm travel
Current max 10A at 25°C



Sphere type
Full travel 1.7mm
Preload 0.37N (37.3gf)
1.82N (186gf) at 1.2mm travel
Current max 10A at 25°C



Crown type
Full travel 1.7mm
Preload 0.37N (37.3gf)
1.82N (186gf) at 1.2mm travel
Current max 8A at 25°C



Spring probe assy (example)

Current rating table

Positions	Current rating (A)
4	8.0
6	7.5
8	7.0
10	6.5

These are affected by current rating of mount board.